

As we look forward to commemorating our Sacred Heart Church's 150<sup>th</sup> anniversary in the year 2022, we plan to honor our past and look forward by establishing a Commemorative Brick Paver Program in our garden areas on our beautiful campus.

We will be creating very special areas for people to pray, meditate and find tranquility and peace. We will have brick paver garden areas by

----- The Sacred Heart of Jesus Garden

----- The Blessed Mother Garden

----- The Veteran's Memorial honoring the living and deceased veterans who served our country so well.

Our Commemorative brick paver program will provide an exceptional opportunity to recognize, honor or memorialize individuals or families, celebrate a special time or event in a life or honor a lifetime milestone. Engraving a person's or family's name on a brick on our church grounds makes an enduring tribute in recognition of someone who has enriched your life or with whom you have shared a special memory. Each brick represents a very unique tribute to a loved one.

All net proceeds from the Brick Program will benefit Sacred Heart Church.

**Sacred Heart Church**

**8245 W 111th Street,**

**Palos Hills, IL 60465**

**(708) 974-3336**

**[pitguy8245@gmail.com](mailto:pitguy8245@gmail.com)**

# Sacred Heart 150th Anniversary



Gardens of  
Memory And  
Thanksgiving

Bricks are :

\$150 each or standard size (4" X 8")

\$250 each for large size (8" X 8")

Placement:

Sacred Heart Statue: 4" X 8" \_\_\_\_\_

8" X 8" \_\_\_\_\_

Blessed Mother statue: 4" X 8" \_\_\_\_\_

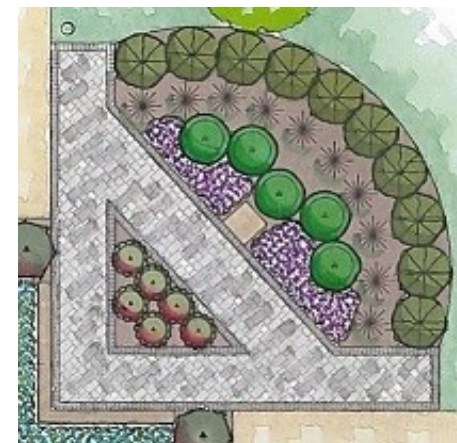
Veterans Memorial: 4" X 8" \_\_\_\_\_

(please indicate location and/or size)



Veterans Memorial Garden

The Blessed Mother Garden



Sacred Heart of Jesus Garden

\_\_\_\_\_  
Contact Name

\_\_\_\_\_  
Email (used for verification)

\_\_\_\_\_  
Phone (Cell / Home)

\_\_\_\_\_  
Mailing Address

\_\_\_\_\_  
City/State/Zip

Payment Information

Make checks payable to Sacred Heart Church (please indicate "Paver Program" on memo line) and drop off at the Parish Office or mail to:

**Sacred Heart Parish**  
**8245 W 111th St**  
**Palos Hills, IL 60465**  
**ATTN: Paul Mikula**

Brick orders will be taken on a continuous basis until the grounds are filled. Bricks will be placed once the order quantities have been met. You will be notified when your brick(s) have been placed. Brick copy varies based on the size you order. Please make sure your engraving information is spelled correctly and please print very clearly.

**4" X 8" stones—up to three lines**


1 2 3 4 5 6 7 8 9 10 11 12 13 14 15 16 17 18

**8" X 8" stones—up to four lines,  
are only available by the Sacred Heart Statue.**


1 2 3 4 5 6 7 8 9 10 11 12 13 14 15 16 17 18

**Each line has 18 characters including spaces and punctuation.**